

Parris Island Declassified

6 Often overlooked Places to Visit on Parris Island



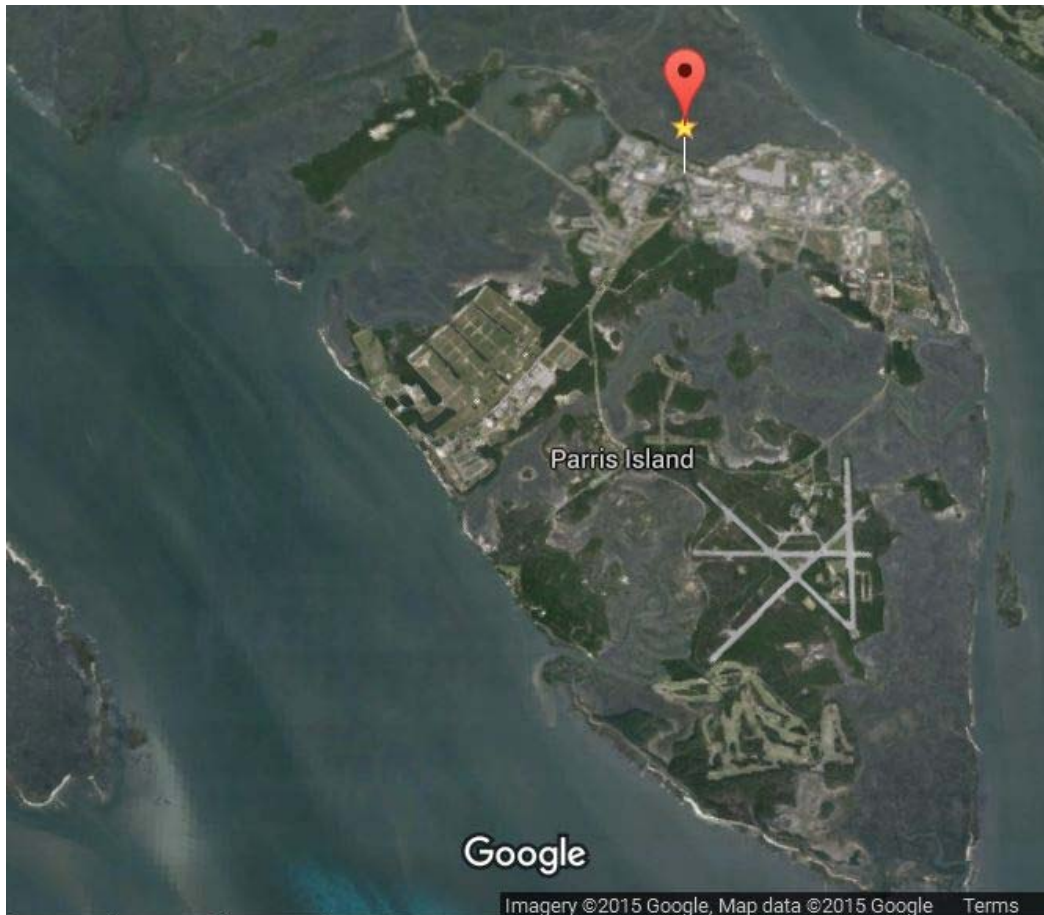
Parris Island Declassified

6 Often overlooked Places to Visit on Parris Island

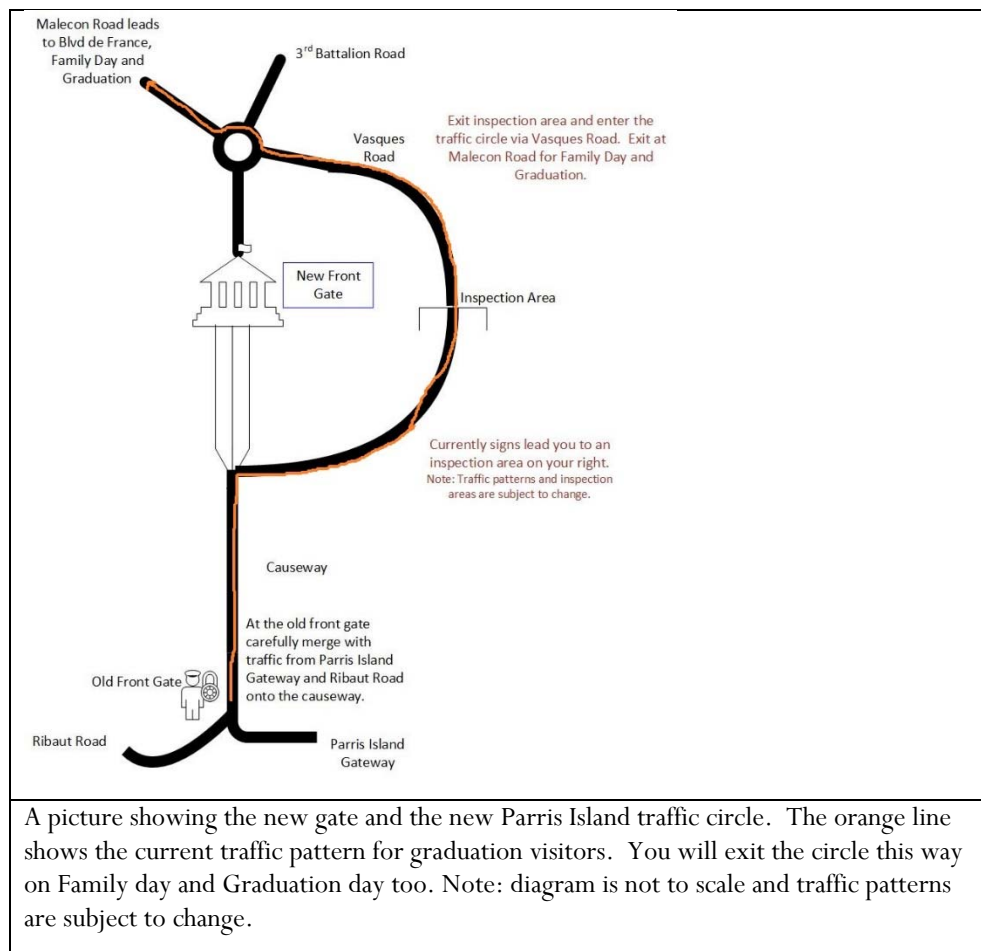
When you visit Parris Island, everyone knows where the Parade Deck is and how to give directions to the All Weather Facility. And it is easy to find the Parris Island Museum. *Parris Island Declassified* shows you other areas to visit while you are on the Depot. Areas that are known by those who live here and have time to explore the base.

For example, have you visited the Wildlife Area where you can take pictures overlooking 3rd Battalion Pond? Do you know where you can have a picnic lunch on family day? How long has Parris Island had a Mascot? Were all of the Parris Island mascots bulldogs? Where can you find the wreckage of a WWII plane? And where can you see recruiting posters dating back through Marine Corps history? Can you find a piece of the World Trade Center somewhere on Parris Island?

You will find the answers to these and other questions in this report.



Arial view of Parris Island.



1. Natural Resources Watchable Wildlife Area

Our first stop is the Natural Resources Watchable Wildlife Area. As you are driving onto Parris Island, continue on the causeway, up over the bridge and onto the traffic circle. Take the second exit, (see picture above) and drive through the wooded area. On your right you will see a spot to pull over, the water you see is called Third Battalion Pond.

When you park you will notice one covered picnic area overlooking the pond, a boat slip, which at one time allowed small boaters to launch out into the water and fish (it is closed now), and a wooden look-out area that extends out along the side of the pond where you can take in the gorgeous view. Mounted around the railing of the deck there are pictures of various birds you might encounter, like herons, wood storks, brown pelicans, etc... Bring your binoculars and see how many birds you can identify. Make sure to bring plenty of sunscreen, bug spray, and don't forget a can of wasp spray for the picnic areas.



MAP OF THE WATCHABLE WILDLIFE AREA AND TWO PICNIC AREAS NEAR THIRD BATTALION POND

2. Picnic Areas Across from the Watchable Wildlife Area

If you don't like the picnic table by the wildlife area, you can always go right across the street, pull in, park and use the picnic benches there to have lunch or just enjoy the view from the other side of 3rd Battalion Pond. If you continue down the road over the next causeway there is another picnic area on the right side. Why not bring a cooler filled with goodies then you won't have to fight the crowds on family day, you can just drive to one of these areas and have a peaceful lunch surrounded by birds, trees and the calming water.

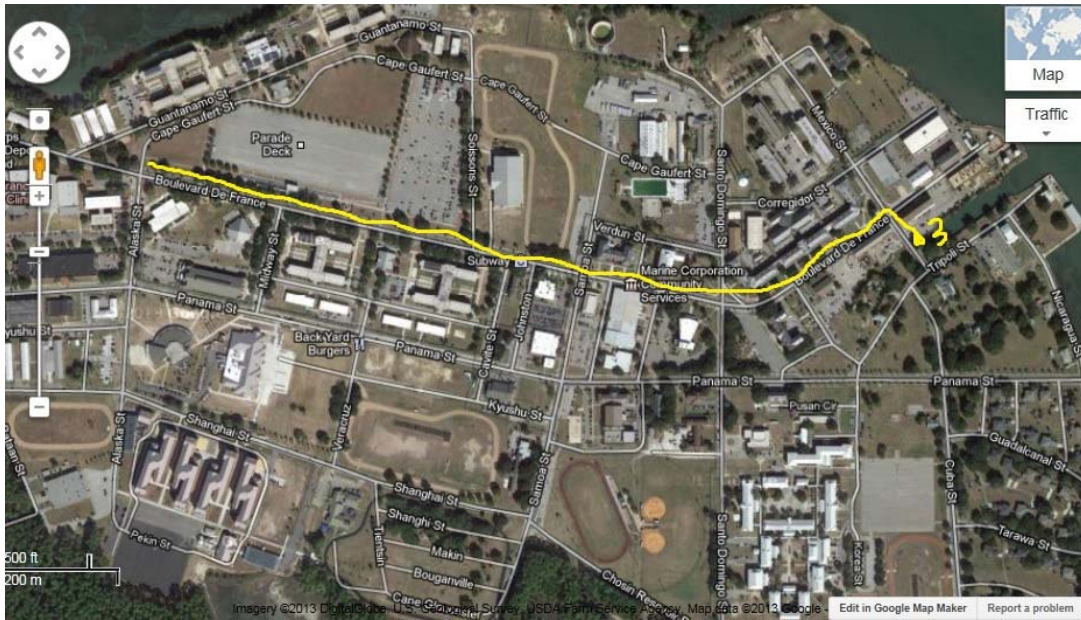
Make sure to dress appropriately for the time of year and remember bug spray is a must no matter where you are on Parris Island. We have plenty of No-see-ums, also called Sand Fleas and they will bite you and leave itchy welts on your skin. They will even bite you on your scalp! Many locals swear by Avon's Skin So Soft; as for me, I like to avoid them at all cost. When I get bit, I use Lanacane to reduce the itchiness.



Sign at the entrance reminding you to leave by sunset



Picnic bench and old grill. Unfortunately, many of the grills are not in good condition.



MAP SHOWS BLVD DE FRANCE MARKED IN YELLOW AND THE TURN ONTO MEXICO STREET

3. Markers Near the General's Quarters

The name of main road that runs in front of the parade deck is Blvd de France. If you follow it past Iron Mike all the way to the end you will see a four way stop. Make a right onto Mexico Street, drive past the building and parking lot on your left and you will see two concrete markers between the parking lot and large gazebo.

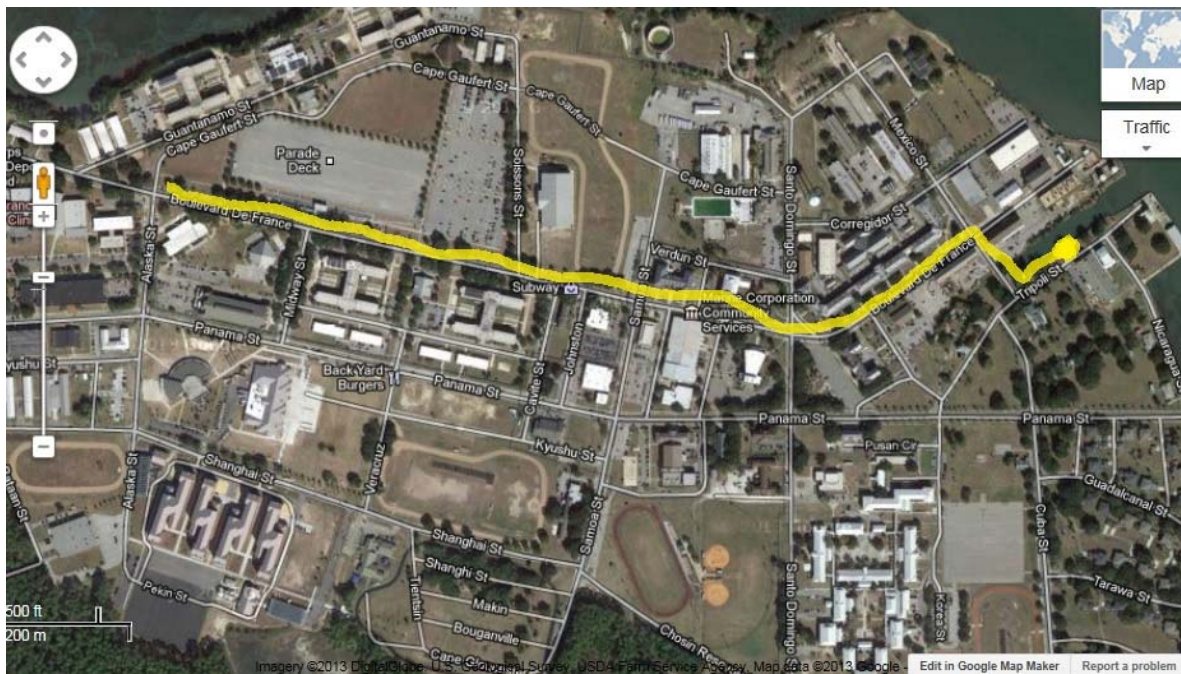
The first marker acknowledges the lives of three WWI pilots killed June 25, 1920 when a DH4 plane piloted by Lieut. Molthen caught fire and then crashed on Parris Island. Captain Gustav Karow's mother placed this marker to honor her son and the other members of the crew. The second marker is for Captain Broadstrom. Stop by on your way to the Lyceum and remember these honorable men.



The marker reads "In memory of Capt Broadstrom, USMC. Associated with recruit training from 1911 to 1921. His influence was reflected in the high standard of men furnished in peace and war."



Captain Gustav Karow graduated from the Virginia Military Institute in 1916. He was from Savannah, Georgia. 1st Lieutenant Stephen St. George was from Boston, Massachusetts and 2nd Lieutenant Frederick T. Molthen was from Butte, Montana



THIS MAP SHOWS BLVD DE FRANCE MARKED IN YELLOW AND THE TURN AT MEXICO STREET, FOLLOWED BY THE LEFT ON TRIPOLI

4. Parris Island Mascot Cemetery

Continue down Mexico Street to the gazebo and turn left at the corner onto Tripoli Street. Half way down on your left you will see a small area filled with grave markers. These markers are for the Parris Island mascots. The oldest and largest marker is for the first mascot named Mike. He was not an English Bulldog, he was an Irish Terrier.

The most recent marker is for Sgt Archibald Hummer an English Bulldog who died September 7, 2011 after 5 years of faithful service. We met Sgt Archibald Hummer before he picked up Sgt. See picture below.

If you continue down Tripoli Street you will see the Lyceum on your Right. That is where you will attend the Family Orientation Brief on Wednesday and the Family Day Buffet on Thursday.



This is the marker for Parris Island's first mascot, Mike.



Here is a picture we had taken with the Commanding General and PI mascot Sgt Archibald Hummer when Mike received the Civilian of the Quarter award in 2010.



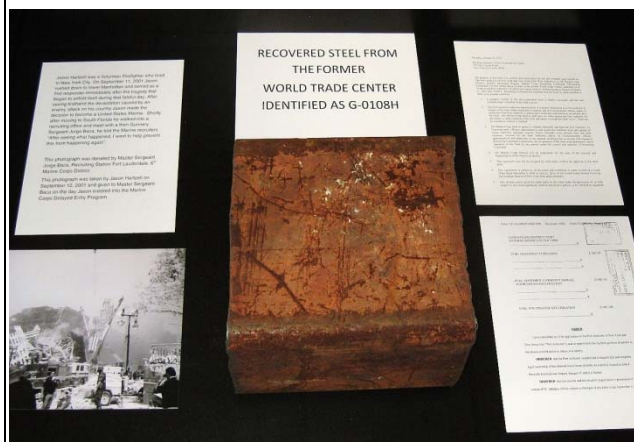
DIRECTIONS TO THE 6TH MARINE CORPS DISTRICT RECRUITING BLDG FROM BLVD DE FRANCE

5. 6th Marine Corps District Recruiting Historic Exhibit Bldg 903

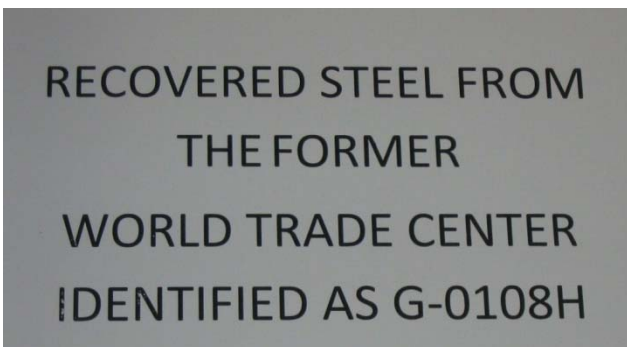
Opened in 2011, the Recruiting Historic Exhibit shows a variety of recruiting posters, articles, information on the Montford Point Marines, a piece of steel from the World Trade Center, and the history of Women in the Marine Corps. This exhibit is located in Building 903, as you enter the front of the building.

In order to get there from the Mascot Cemetery from Blvd de France, drive as if you are heading toward the mascot cemetery but make a right at the General's Quarters onto Tripoli Street. Then make a left onto Cuba Street. Cross over Panama Street. As you drive, you will see Officer's housing on your left and on your right the 4th Battalion Track PT Course. Turn right at Gavatu and make a left into the parking area of Building 903, the 6th Marine Corps Recruiting District building.

On my last visit in January 2013, some of the exhibits, which were on loan, were gone and the area did not have as many things to see as it did the last time I went, however there are still vintage recruiting posters, steel from the World Trade Center and various recruiting items. See the next page for some pictures I took.



Display of steel from the World Trade Center



Magnified Card from the World Trade Center Display



Picture of the history of Bldg 903



Female Marines outside Bldg 903



Vintage Recruiting Posters



Vintage Recruiting Posters



ARIAL VIEW OF LEGENDS GOLF COURSE PARKING AREA AND THE WOODED AREA CONTAINING A WALKING TRAIL.

6. Trail by Legends Golf Course with WW2 Plane Wreckage

The legends golf course is no secret; it is located on 229 Belleau Wood Road, Bldg 299. The course is open to the public. If you are interested in playing a few rounds of golf call them at 843-228-2240 for tee times. After the game, grab some chicken fingers or a club sandwich and some french fries at the Sand Trap Grill and Cafe located in the club house which is open from 7am to 2pm. Visit <http://www.thelegendspi.com/> to find out more about the cost for a round of golf, additional info about the course and the menu for the Sand Trap Grill and Cafe.

While you are there, step out into the parking lot and walk the nature trail. On the trail go back in time and find a battered WWII Brewster Buccaneer that crashed as it tried to land on the air strip in 1943.



After walking the trail take a look at what is left of Jean Rebaut's Charlesfort and two Spanish forts, San Marcos and San Felipe nearby.

This report showed you six places the average visitor doesn't see. I started with the 3rd Battalion Pond Natural Resources Watchable Wildlife Area, a place where you can get away from the crowds and enjoy the views overlooking 3rd Battalion Pond. Next we went across the street to the picnic areas for solitude and views from the other side of the causeway.

The markers on Mexico Street are tucked in on the left side of the road and tell the story of a plane crash long ago. A block away on Tripoli Street, grave markers remind us of the mascots who served aboard the Depot, the largest of which belonged to the first Parris Island Mascot, Mike who was a terrier, not a bulldog.

The 6th Marine Corps District Building has a unique display of recruiting posters, the history of women in the Marine Corps and a piece of the World Trade Center. And our last stop near Legends Golf Club contains a walking trail where you can see an old WWII plane and look out over the ocean.

I hope you will consider exploring some of these places when you visit Parris Island. After you visit, please e-mail me or post a comment on ParrisIsland.com to let me know your thoughts about your visit and the places in this report. I look forward to hearing from you.